

Lilybelle®



- > 633687
- > EU-REACH 01-2120042063-72

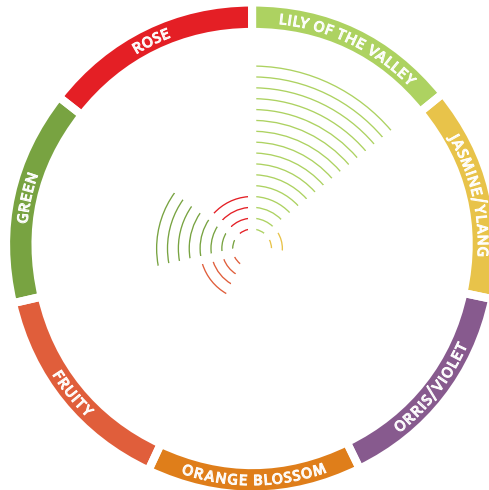
- > cas 1378867-81-2

Pu Perfumery Use

- > underlines the lily of the valley characteristics in a composition
- > implements ozonic-green facets and creates watery, airy transparent accents
- > provides a green aldehydic element to powdery notes
- > refreshes and provides lift in general
- > recommended use level: 0.1 – 5%

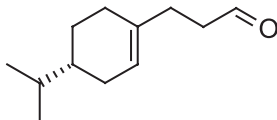
O Odor

- > Floral, Lily of the Valley, Aldehydic, Green, Cyclamen



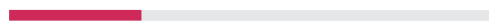
Cs Chemical Structure

- > 3-[(4R)-4-(Propan-2-yl)cyclohex-1-en-1-yl]propanal



Tb Tenacity on Blotter

hours			days			months		
<1	3	10	1	3	10	1	3	>3

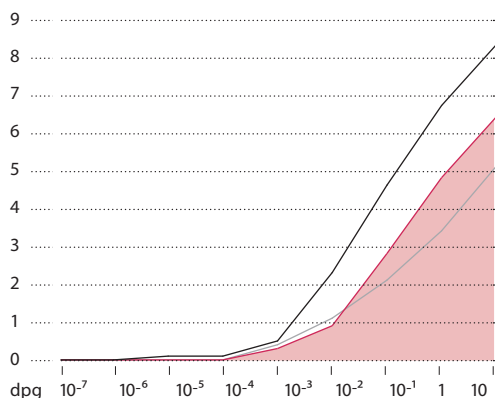


Pd Product Data

> Appearance	clear, colorless to light yellow liquid
> GC Purity	min. 95 %
> Flash Point	> 100 °C
> MW	180 g/mol
> BP	250.7 °C
> Log P (k _{ow})	4.8
> Stabilizer	yes
> Occ. in Nature	no
> Renewable Factor	83.3 % (upcycled)
> Biodegradability	63.0 % (readily)
> Chem. Class.	aldehyde

Dr Dose Response

impact — aldehyde c10 — linalool

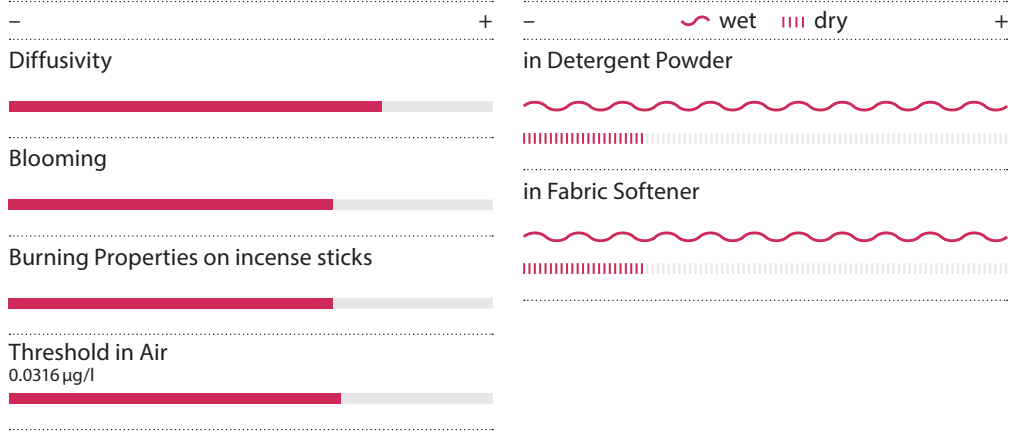


Lilybelle®



> 633687

P Performance



S Stability

Dos. %	3 months at 40°C	pH	- Discoloration +	- Odor +
> 4.0	Eau de Toilette	-		
> 1.2	Soap	9-10		
> 1.0	AP Roll-On 15% ACH	4		
> 1.0	Deostick, Stearate	8.5		
> 0.5	Shampoo/Shower Gel	6		
> 0.4	Hair Conditioner	4		
> 0.3	Body Lotion	6.5		
> 0.6	Fabric Softener Conc.	2.5		
> 0.5	Detergent Heavy Duty Liquid	8.5		
> 0.3	Detergent Powder Conc.	10		
> 8.0	Rimblock Liquid	7		
> 0.3	Cleaner APC Liquid	8-10		
> 0.3	Cleaner Liquid Citric Acid	2		

These suggestions and data are based on information we believe to be reliable. They are offered in good faith, but without guarantee, as conditions and methods of use of our products are beyond our control. Symrise makes no warranties, either expressed or implied, as to the accuracy or appropriateness of this data. Symrise expressly disclaims any implied warranty of fitness for a particular use. We recommend that prospective users determine for themselves the suitability of Symrise materials and suggestions for any use prior to their adoption. We also recommend that prospective users, as required, obtain approval from appropriate regulatory authorities. Suggestions for uses of our products or the inclusion of descriptive material from patents and the citation of specific patents in this publication should not be understood as recommending the use of our products in violation of any patent or as a permission or licence to use any patent of Symrise.