

# Methyl Acetophenone Para



- › **611306**
- › EU-REACH 01-2119972326-32

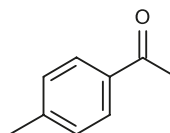
- › CAS 122-00-9

## Pd Product Data

› <b>APPEARANCE</b>	clear, colorless to pale yellow liquid
› <b>GC PURITY</b>	min. 96%
› <b>FLASH POINT</b>	approx. 93 °C
› <b>MW</b>	134.19 g/mol
› <b>BP</b>	226.3 °C
› <b>STABILIZER</b>	no
› <b>BIODEGRADABILITY</b>	60.0 % (readily)
› <b>CHEM. CLASS.</b>	ketone

## Cs Chemical Structure

- › 1-(4-Methylphenyl)-ethanone



## Pu Perfumery Use

- › recommended use level: 0.1 – 3 %

## O Odor

- › Floral, Fruity, Neroli, Anise, Almond

These suggestions and data are based on information we believe to be reliable. They are offered in good faith, but without guarantee, as conditions and methods of use of our products are beyond our control. Symrise makes no warranties, either expressed or implied, as to the accuracy or appropriateness of this data. Symrise expressly disclaims any implied warranty of fitness for a particular use. We recommend that prospective users determine for themselves the suitability of Symrise materials and suggestions for any use prior to their adoption. We also recommend that prospective users, as required, obtain approval from appropriate regulatory authorities. Suggestions for uses of our products or the inclusion of descriptive material from patents and the citation of specific patents in this publication should not be understood as recommending the use of our products in violation of any patent or as a permission or licence to use any patent of Symrise.