

Methyl Naphthyl Ketone Beta Cryst.



› 660240

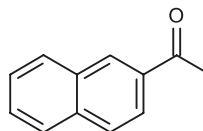
› CAS 93-08-3

Pd Product Data

› APPEARANCE	pale white to white crystals
› GC PURITY	min. 99%
› FLASH POINT	> 100 °C
› MW	170.22 g/mol
› BP	> 300 °C
› STABILIZER	no
› BIODEGRADABILITY	87.8 % (readily)
› CHEM. CLASS.	ketone

Cs Chemical Structure

› 1-(2-Naphthyl)-ethanone



$C_{12}H_{10}O$

Pu Perfumery Use

› recommended use level: 0.1 – 4 %

O Odor

› Floral, Orange Blossom, Anthranilate, Powdery

These suggestions and data are based on information we believe to be reliable. They are offered in good faith, but without guarantee, as conditions and methods of use of our products are beyond our control. Symrise makes no warranties, either expressed or implied, as to the accuracy or appropriateness of this data. Symrise expressly disclaims any implied warranty of fitness for a particular use. We recommend that prospective users determine for themselves the suitability of Symrise materials and suggestions for any use prior to their adoption. We also recommend that prospective users, as required, obtain approval from appropriate regulatory authorities. Suggestions for uses of our products or the inclusion of descriptive material from patents and the citation of specific patents in this publication should not be understood as recommending the use of our products in violation of any patent or as a permission or licence to use any patent of Symrise.