

BOTANICALS
Actipone[®] Nutgrass
(Motha) Root GW
139445



Actipone® Nutgrass (Motha) Root GW
No. 139445
Ayurvedic, Skin Lightening* and Anti-Irritant*

PRODUCT CHARACTERISTICS

- Traditional ayurvedic plant
- Glycerol water based extract
- Soluble in water
- Inhibition of melanin production*
- IL-1 α inhibition activity* (anti-irritant)

NUTGRASS

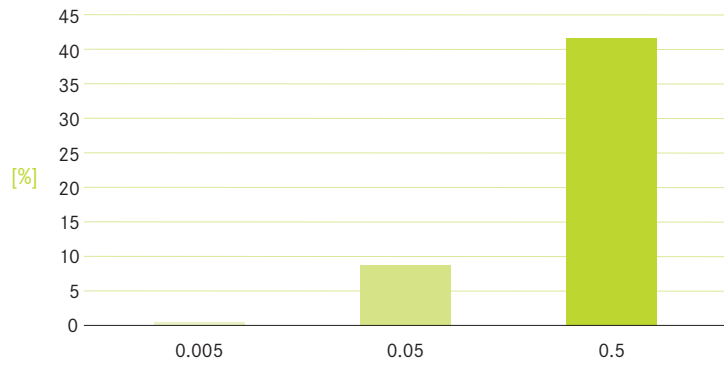
- Member of the Cyperaceae family
- Can be found in Asia, Australia, America and Europe
- Grass-like herb, it is a common weed represented by several families growing in India
- Brown-blackish rhizomes are slightly fragrant, and in Asia the essential oil is used as a perfume and insect repellent
- Mentioned in literature of Arabian and Persian medicines

TRADITIONAL USE

- Dioscorides mentions the use as a diuretic in the treatment of ulcers and as an ingredient in warm plasters
- Leaves are used in basketry and for weaving hats, matting etc.
- The aromatic root is dried and ground into a fine powder that is used like talcum powder
- The decoction of the roots and tubers is known as an excellent antidote to all poisons



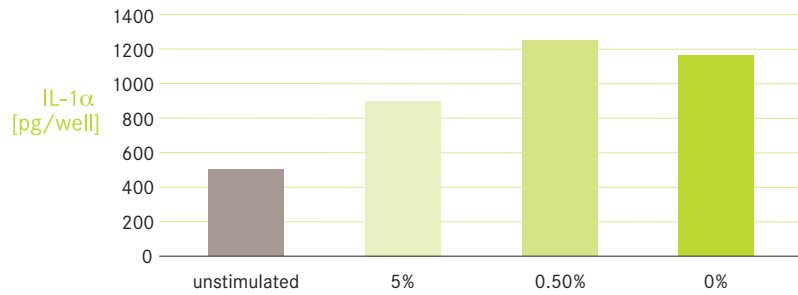
INHIBITION OF MELANIN PRODUCTION



Actipone® Nutgrass (Motha) Root GW [%]

Actipone® Nutgrass (Motha) Root GW shows a melanin inhibition of approx. 40% at a concentration of 0.5% in a toning assay (B16V cells).*

ANTI-IRRITANT ACTIVITY



Actipone® Nutgrass (Motha) Root GW shows an inhibition of IL-1α of 25% at a concentration of 5% relative to stimulated control.*

*in vitro tested