

ACTIVE INGREDIENTS
SymRepair[®]
153884

symrise 
always inspiring more...



SymRepair® No. 153884

Skin Barrier Repair Complex

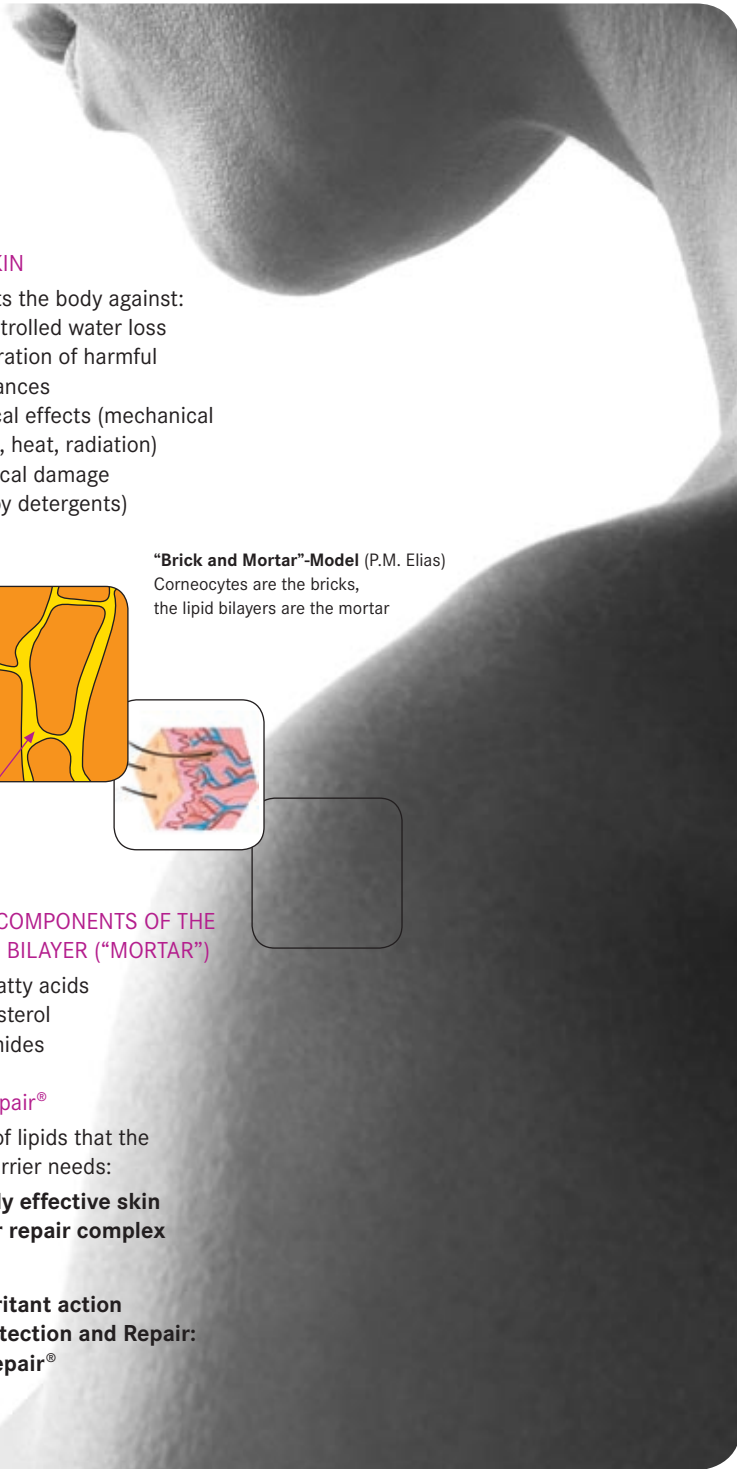
BENEFITS

- Highly effective synergistic blend of the three key components of the barrier lipid combined with anti-irritant action
- Repair of skin barrier (several in-vivo studies available upon request – SDS method)
- Protection of skin barrier (in-vivo study available upon request – SDS method)
- SymRepair® quickly reconstitutes lamellar bilayers resembling those of the skin (in-vivo)
- Easy to formulate (SymRepair® is a liquid. The incorporated pseudoceramide has a low melting range of 56-59 °C and excellent stability.)

PRODUCT DESCRIPTION

- Innovative lipid mixture based on the three key components of the lamellar bilayers of the stratum corneum
- Contains anti-irritant natural Bisabolol
- Clear, colorless to pale yellow oil
- Usage concentration: 1.0 to 4.0%
- BSB innovation award: First Prize

April 2007 at the IN-COSMETICS in Paris



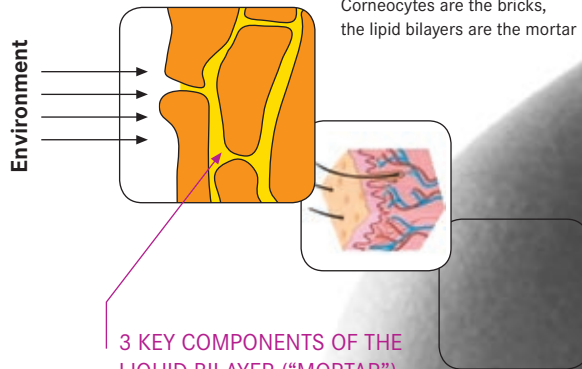
THE SKIN

Protects the body against:

- uncontrolled water loss
- penetration of harmful substances
- physical effects (mechanical stress, heat, radiation)
- chemical damage (e.g. by detergents)

“Brick and Mortar”-Model (P.M. Elias)

Corneocytes are the bricks,
the lipid bilayers are the mortar



3 KEY COMPONENTS OF THE LIQUID BILAYER (“MORTAR”)

- Free fatty acids
- Cholesterol
- Ceramides

SymRepair®

Blend of lipids that the skin barrier needs:

a highly effective skin barrier repair complex

PLUS

anti-irritant action

=> Protection and Repair:

SymRepair®